

Influenza Season

WHAT IS HUMAN INFLUENZA?

A respiratory infection with fever and often respiratory complications. It more frequently effects immuno-compromised and elderly populations. It is transmitted human-to-human. There are 3 types of Influenza; A, B & C. Many different strains of influenza exist. Influenza A is a group of viruses that cause contagious respiratory disease. H1N1 is a new influenza virus causing illness in humans, first detected in the US in April 2009.

HOW IS HUMAN INFLUENZA TRANSMITTED?



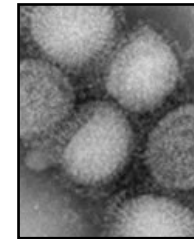
Droplet Transmission - Large droplets generated by sneezing, coughing or talking. Occurs over a distance of up to 6 feet

Contact Transmission - Directly touching an infected human or indirectly by touching an object that an infected human touched or contaminated with droplets

Airborne Transmission - Due to small droplet nuclei, distance traveled is unknown

How long can an infected person spread this virus to to others? One day prior to showing symptoms and up to seven days after symptoms first appear. Most infectious during the first 3 days of illness. This can be longer in some people, especially children and people with weakened immune systems and in people infected with the new H1N1 virus.

HOW LONG DOES INFLUENZA VIRUS SURVIVE?



Stainless Steel and Plastic - survives 24-48 hours and can be transferred to hands up to 24 hours

Cloth, Paper and Tissues - survives 8-12 hours, and can be transferred to hands up to 15 minutes

Hands - survives up to 5 minutes

GENERAL INFLUENZA PREVENTION

2008-2009 seasonal influenza vaccine not likely to protect humans from 2009 H1N1 flu virus. Follow precautions for seasonal influenza to control spread of disease. EPA states "Currently registered influenza A virus products will be effective against the 2009 H1N1 flu strain."

PERSONAL HYGIENE

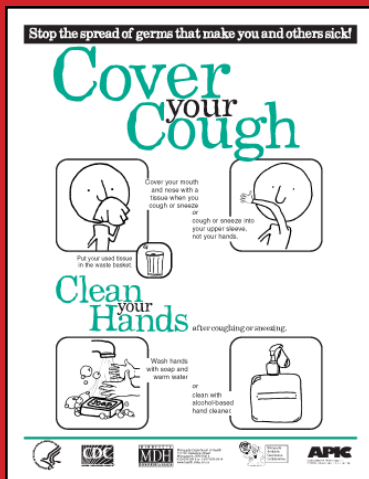
PROPER HAND WASHING PROCEDURES

Wet hands with warm water, then apply soap to hands. Rub hands together vigorously for 15-20 seconds, covering all surfaces of hands and fingers. Rinse hands with warm water. Thoroughly dry hands with disposable towel or air blower. Then use towel to turn off faucet.

COUGH OR SNEEZE PROCEDURES

Cover your nose and mouth with a tissue when you cough or sneeze. Throw the tissue in the trash after you use it.

- continued on back



Posters are available in several languages from www.cdc.gov/h1n1flu/general_info.htm or handwashing posters from NRA ServSafe™ www.restaurant.org/fluinfo. Other free resources and downloads at www.cdc.gov/flu/freeresources/print

PRODUCTS GINSBERG'S STOCKS FOR DISINFECTING & SANITIZING CERTIFIED BY THE EPA AS EFFECTIVE AGAINST INFLUENZA A

- 14256 Clorox Disinfecting Wipes
- 15225 Clorox Bleach
- 14245 Lysol Disinfecting Spray
- 14306 Defend (for housekeeping)
- 14312 Barrier II - no rinse quaternary sanitizer (for food contact surfaces)

"Though the scientific evidence is not as extensive as that on handwashing and alcohol-based sanitizers, other hand sanitizers that do not contain alcohol, may be useful for killing flu germs on hands in settings where alcohol-based products are prohibited" From CDC's "Take 3" brochure.

- 16306 Insta-San
- 16308 Foam Hand-Sanitizer

USE OF HAND SANITIZER

Alcohol-based hands cleaners are effective. Use on visibly clean hands. Apply product to palm of hand. The rub hands together covering all surfaces of hands and fingers. Rub 15-20 seconds. Consider offering in public areas for your customers. See side panel note on non-alcohol based sanitizer effectiveness.

HARD SURFACE CLEANING AND DISINFECTING

Clean - Organic material could protect the virus from sanitizers or disinfectants. Removal of organic material is a key part of effective disinfection.

Rinse - Detergents should be rinsed off to avoid dilution or inactivation of disinfectant

Disinfectant - Follow directions for use on the product label of a properly registered disinfectant which has claims of effectiveness against influenza viruses listed on the label.

<http://www.epa.gov/oppad001/influenza-disinfectants.html>

HARD SURFACE DISINFECTION

Wipe Down - frequently touched surfaces with a properly registered disinfectant. These surfaces include: light and air control switches, faucets and toilet flush levers, door knobs, tv and radio controls, remote controls, telephones, touch screens, public restroom doors, etc.

Disinfect - all surfaces in the bathroom that may contacted respiratory secretions, urine or feces according to standard infection control procedures.

Carefully Read and Follow all product directions according to the product label.

PERSONAL PROTECT EQUIPMENT (PPE)

Wear Disposable Gloves - while cleaning and disinfecting. Discard gloves after use. Wash hands frequently before and after gloving with soap and water and/or use an alcohol based hand sanitizer.

Masks Advised - for direct contact with influenza patients in healthcare settings.

SUMMARY TO MINIMIZE RISKS

- ✓ Wash your hands often
- ✓ Avoid touching eyes, nose and mouth
- ✓ Try to avoid close contact with sick people
- ✓ Cover your mouth and nose when coughing or sneezing
- ✓ Stay at home if you're sick to limit infecting others

H1N1 FLU FACTS?

This virus was originally referred to as "swine flu" because laboratory testing showed that many of the genes in this new virus were very similar to influenza viruses that normally occur in pigs (swine) in North America. But contact with pigs is NOT associated with ongoing transmission in the 2009 outbreak. Further study has shown that this new virus is very different from what normally circulates in North American pigs. It has two genes from flu viruses that normally circulate in pigs in Europe and Asia and bird (avian) genes and human genes. Primary mode for this virus is thought to be similar to seasonal flu.

Influenza viruses are NOT known to be spread through consumption of food, including pork http://www.fda/oc/opacom/hottopics/H1N1Flue/faq_food.html

Symptoms include fever, cough, sore throat, runny or stuffy nose, body aches, headache, chills, fatigue, vomiting and diarrhea.

It is not necessary to alter cooking times or temperature for any food products in order to reduce chances of contracting 2009 H1N1 flu virus, because eating food is not a known method of transmission of influenza viruses.

Influenza virus is destroyed by heat (167-212°F [75-100°C]). In addition, several chemical germicides, including chlorine, hydrogen peroxide, detergents (soap), iodophors (iodine-based antiseptics), and alcohols are effective against human influenza viruses if used in proper concentration for a sufficient length of time. For example, wipes or gels with alcohol in them can be used to clean hands. The gels should be rubbed into hands until they are dry.

People at greatest risk for human H1N1 infection include children, pregnant women, and people with chronic health conditions like asthma, diabetes or heart and lung disease.

Sources: National Restaurant Association and CDC



Route 66 Hudson, New York, 12534
 PHONE: 800.999.6006 or 518.828.4004
www.ginsbergs.com
 E-mail: info@ginsbergs.com

H1N1

The CDC's (Centers for Disease Control & Prevention) definition of **H1N1** (swine flu): **H1N1** (referred to as "swine flu" early on) is a new influenza virus causing illness in people. This virus is spreading from person-to-person, probably in much the same way that regular seasonal influenza viruses spread. <http://www.cdc.gov/h1n1flu/>

■ **HAND WASHING AND SANITIZING** Public concern about **H1N1** Influenza A has prompted many calls about procedures and chemicals for disinfection in healthcare facilities and schools. The following website was updated as of September 14, 2009 and covers information for facilities serviced by our distributors. This can be accessed at www.cdc.gov/ Click on **H1N1 Flu**. Scroll to: • General Info on 2009 H1N1 Flu
• Info for Specific Groups



With regard to handwashing, the CDC is recommending a vigorous hand washing/sanitizing program. The CDC recommends that you wash your hands with soap and **warm** water for 15 to 20 seconds. Any of the **INTEGRA®** hand washes such as, **Assure**, **Citri Foam** or **Green Antibacterial Hand Soap** can be used as hand soap.

According to EPA and FDA protocols, there are no hand sanitizers on the market with specific **H1N1** claims. The CDC does, however, provide "preventative steps" for various facilities at www.flu.gov/. "**Take 3**" Steps To Fight The Flu is a brochure that can be found at cdc.gov/flu/freeresources/print.htm, as well as other free resources and downloads.

It is important to note that this brochure identifies non-alcohol hand sanitizers as part of an **H1N1** hand cleaning and sanitizing program. Excerpt from "**Take 3**" brochure... "Though the scientific evidence is not as extensive as that on hand washing and alcohol-based sanitizers, other hand sanitizers that do not contain alcohol, may be useful for killing flu germs on hands in settings where alcohol-based products are prohibited."

Non-alcohol hand sanitizers like **Insta San**, **Instant Non-Alcohol Foaming Hand Sanitizer** and **Instant Free** can be included in **H1N1** programs.



■ **HARD SURFACE CLEANING** Because of the very recent identification of the **H1N1** virus, no disinfectants at this time have been specifically approved for this virus. However, we have been forwarded the following information from our primary registrant for **DEFEND** and **BARRIER II**, which indicates that both products are appropriate for disinfection against **H1N1**.



US EPA GUIDANCE: Ms. Michele Wingfield, Branch Chief, Product Science Branch of the US EPA Office of Pesticide Programs, Antimicrobial Division is recommending the use of any registered product with label claim against Influenza A. If your products have an Influenza A label claim, you can use against the current **H1N1** strain.

Specific procedures for cleaning and disinfection are on every label. It is very important to follow Virucidal Directions for Use from the **BARRIER II** and **DEFEND** labels. These directions contain claims for Influenza A virus. The quantities and ppm of quat are:

DEFEND - 2 oz per gallon - 703 ppm
BARRIER II - 3 1/2 oz per 5 gallon - 547 ppm

ATK4503 - Test Paper, QC-1000 - Quat 0-1000ppm - This is the best range for paper testing. (Alternately, you can use the 0-400, but will need to dilute sample in half and multiply results by 2.)

ATK4502 - Test Paper, QT-10, 0-400ppm

ATK4505 - Test Strips, QAC or Quat, 0-400ppm - 200 count strips

If you have concerns or questions, please do not hesitate to call **An-Care Technical Services** at 800-366-2477.



For CloroxWeb, TheCloroxCompany.com, Cloroxprofessional.com, AFH Field Sales Organization, AFH Broker Partners, and other inquiries

April 29, 2009

Several Clorox Products Effective Against Flu

The Clorox Company is working closely with public health organizations to support their efforts to educate people about protecting themselves from swine flu. The World Health Organization has raised the influenza pandemic alert from Level 4 to 5. Level 6 is considered a global pandemic.

Several Clorox Products Effective Against Flu Virus

The government website – www.pandemicflu.gov – recommends several steps for consumers to take to help protect themselves from flu, including disinfecting frequently touched surfaces. Among the products consumers can turn to for disinfection are: Clorox® regular bleach, Clorox® disinfecting wipes and Clorox® Clean-Up® cleaner with bleach spray cleaner. In the Away From Home markets, customers can also turn to Clorox Commercial Solutions® Ultra Clorox® germicidal bleach, germicidal wipes and germicidal spray; as well as Clorox® pro quaternary all-purpose disinfectant cleaner.

Hand Sanitizers Included in CDC Recommendations to Help Prevent Spread of Germs

Also, in accordance with recommendations by the U.S. Centers for Disease Control and Prevention (CDC), institutional customers, such as hospitals and health-care providers, can turn to Clorox Commercial Solutions® Clorox® hand-sanitizing spray to help kill germs on hands. The CDC recommends the following everyday steps to protect your health:

- Cover your nose and mouth with a tissue when you cough or sneeze. Throw the tissue in the trash after you use it.
- Wash your hands often with soap and water, especially after you cough or sneeze. Alcohol-based hand cleaners are also effective.
- Avoid touching your eyes, nose or mouth. Germs spread this way.
- Try to avoid close contact with sick people.
- If you get sick with influenza, CDC recommends that you stay home from work or school and limit contact with others to keep from infecting them.

Clorox Is Coordinating a Multinational Response

In international locations, our Research & Development and Marketing teams are working together to communicate recommendations to local retailers and consumers with up-to-date information about the efficacy of our disinfecting products. In all company locations, customer-facing and product supply teams are working to assess product availability in impacted regions so we can ensure our products are readily available where consumers shop.

We have received requests for product donations and we're working with international relief agencies to coordinate product donations in the areas most affected.

As more information becomes available, we will update employees, customers and consumers, as appropriate.

For More Information

For more information on how to stop the spread of flu viruses on surfaces at home and in public places, visit the CDC's pandemic flu Web site at <http://www.pandemicflu.gov/plan/individual/panfacts.html>

Directions for Disinfecting Against Influenza

Product	Directions for Use (English)	Directions for Use (Spanish)
Clorox Commercial Solutions Ultra Clorox Germicidal Bleach Ginberg's # 15225	TO DISINFECT FLOORS, WALLS, BATHTUBS & SHOWERS: Pre-wash surface, mop or wipe with a bleach solution (2/3 cup bleach in 1 gallon of water). Allow solution to contact surface for at least 5 minutes. Rinse well and air dry.	PARA DESINFECTAR PISOS, PAREDES, BANERAS Y DUCHAS: Haga un prelavado de la superficie, trapee o limpie con la solución de blanqueador (2/3 de taza en 1 galón de agua). Deje que la solución tenga contacto con la superficie por lo menos pos 5 minutos. Enjuague bien y seque al aire.
Clorox Commercial Solutions Clorox Disinfecting Wipes Ginsberg's # 14256	TO DISINFECT: Use to disinfect hard, nonporous surfaces. Wipe surface to be disinfected. Use enough wipes for treated surface to remain visibly wet for 4 minutes. Let surface dry. For highly soiled surfaces, clean excess dirt first.	PARA DESINFECTAR: Use para desinfectar superficies duras y sin poros. Limpie la superficie para ser desinfectada. Use suficientes toallitas para que la superficie tratada permanezca visiblemente mojada por 4 minutos. Deje secar la superficie. Para superficies muy sucias, limpie primero el exceso de mugre.